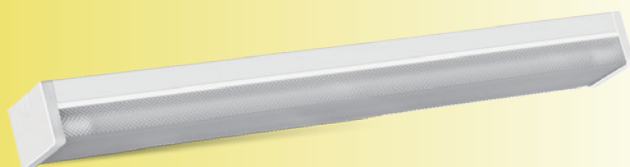


- Regular batten complete with LED tubes and diffuser.



Stylish
diffuser

FEATURES

- High efficiency LED T8 tube fitted
- Powder coated steel base
- PMMA diffuser
- Large 6mm terminal block for easy installation
- Safety fuse installed
- Fitting colour: White
- Side and top cable entry options

INCLUDES

- Batten with LED tubes
- Mounting accessories

INSTALLATION OPTIONS

- Surface mounted

APPLICATIONS

- Offices
- Garages
- Stations
- Industrial

WARRANTY

- Five years (subject to terms and conditions)

CERTIFICATION	IP RATING	DIMMABLE	DISTRIBUTION	DIMENSIONS(mm)

Part No.	Voltage	Watt.	PF	CCT.	Ra	Lumen	Beam Angle	Lifetime L70B50	Size(L*W*H)mm
212005	100-240V	1×9W	0.9	4000K	≥80	750lm	110°	40000h	620*68*90
212006	100-240V	2×9W	0.9	4000K	≥80	1500lm	110°	40000h	620*125*93
212007	100-240V	1×16W	0.9	4000K	≥80	1500lm	110°	40000h	1230*68*90
212008	100-240V	2×16W	0.9	4000K	≥80	3000lm	110°	40000h	1230*125*93
212608	100-240V	1×9W	0.9	6500K	≥80	750lm	110°	40000h	620*68*90
212609	100-240V	2×9W	0.9	6500K	≥80	1500lm	110°	40000h	620*125*93
212610	100-240V	1×16W	0.9	6500K	≥80	1500lm	110°	40000h	1230*68*90
212611	100-240V	2×16W	0.9	6500K	≥80	3000lm	110°	40000h	1230*125*93

Part No.	Model No.	VEET Status	IPART Status
212005 212608	YKTPLB1-1L60	Approved VEET No.: 4389	Approved IPART No.: 24143S20-EAJJJJII
212006 212609	YKTPLB1-2L60	Approved VEET No.: 4389	Approved IPART No.: 24143S20-EAJJJJII
212007 212610	YKTPLB1-1L120	Approved VEET No.: 4389	Approved IPART No.: 24143S20-EAJJJJII
212008 212611	YKTPLB1-2L120	Approved VEET No.: 4389	Approved IPART No.: 24143S20-EAJJJJII

[1] Operating Frequency=50/60Hz

[2] Switch Times≥20000

